



PRODUCT SPECIFICATIONS
TUNNEL-SHAPED PEPPER-COVERED SALAMI WITH CHOPPED HAM
(2% pepper, 40% ham)

Code number: 3810

Product denomination: TUNNEL-SHAPED PEPPER- COVERED SALAMI WITH CHOPPED HAM. (2% pepper, 40% ham)

Family: SALAMI

E.A.N code: 22815

Place manufacturing: Vall de Bianya (Spain).

DESCRIPTION

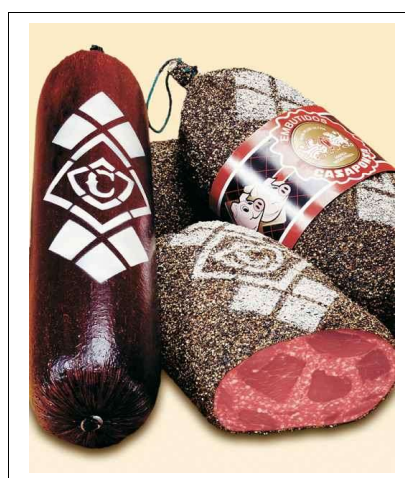
A-Quality: Extra.

B-Approximate weight per piece: 3,900 kg.

C-Unit of sale: Kg.

D-Shelf-life: 4 months (natural / gas)
5 months (vacuum)

E-Temperature: 10 / 15 °C (natural)
0 / 5 °C (vacío / gas)



PRESENTATION.

A-Presentation: natural / vacuum / gas

B-Type of packaging: boxes.

C-Size box: 34,5 x 10 x 33,5 cm.

D-Approx weight per box: 7,8 kg aprox.

E-Pieces per box: 2.

PALETTISATION.

A-Number boxes per palette: 60

B-Size palette: EUR.

C-Net weight per palette: 468 kg approx.

D-Gross weight per palette: 490 kg approx + 24 kg palet.

INGREDIENTS:

Ham, pork fat and lean (90%), salt, powdered milk, milk and soy proteins, dextrin, dextrose, acidulant (E-575), spices, smoke flavour, flavour enhancer (E-621), stabiliser (E-451), preservatives (E-250, E-252), antioxidant (E-301), colouring (E-120).

Not suitable for allergic to soy, milk and products thereof.

NUTRITIONAL AND BROMATOLOGIC ANALYSE

CHEMICAL	Result	Reference value *
Protein:	45,72 % s.s.s.	> 22 % s.s.s.
Fat matter:	39,47 % s.s.s.	< 68 % s.s.s.
Hidroxiprolina	0,32 % s.s.s.	< 0,7 % s.s.s.
Carbohydrate:	3,56 % s.s.s.	< 9 % s.s.s.
Insoluble carbohydrate:	1,02 % s.s.s.	< 2 % s.s.s.

MICROBIOLOGY	Result	Reference value *
· Rec.Aerobios total 30 °C	1,1x10 ⁵ u.f.c/gr	
· Rec.Enterobacterias	Absence u.f.c/gr	Absence / 10 gr.
· Rec.Coliformes 30 °C	<1x10 ¹ u.f.c/gr	
· Rec.Estafilococos coagulasa + (Stahylococcus aureus and others)	<1x10 ¹ u.f.c/gr	<1x10 ² u.f.c/gr
· Id. Salmonella spp	Absence / 25gr	Absence / 25gr
· Rec.Clostridium perfringens	<1x10 ¹ u.f.c/gr	<1x10 ² u.f.c/gr
· Rec. Mohos	<1x10 ¹ u.f.c/gr	
· Rec.Levaduras	1,4 x10 ⁴ u.f.c/gr	
· Presencia Listeria	Absence /gr	<1x10 ² u.f.c/gr
· Rec.Escherichia coli B glucoronidasa positiva	<1x10 ¹ u.f.c/gr	<2,3x10 ² u.f.c/gr

Calorie (100 grs.):	269,93 Kcal.	1.122,64 Kj.
---------------------	--------------	--------------

* According to Order of 7th February 1980. BOE nº 70/1980.

Declaration: The above data is the result of technical analyses carried out by authorized laboratories.

They fulfil the European Community Regulations currently in force.

The external coating contains E-235.

Production place:

HIJOS DE J. CASAPONSA, S.A.
 Ctra. Comarcal 26, Km. 222
 E-17813 Vall de Bianya (Girona) Spain
 Tel:00.34.972292001/ 00.34.972291329
 Fax: 00.34.972291330
 info@casaponsa.com
 www.casaponsa.com
 R.S: ES 10.01810/GE CE